

Product Information

Language	INGLESE
Nr.	251
Date	12/2015
Subject	GST 250



our power, your passion

NEW PROFESSIONAL GST 250 PRUNING CHAINSAWS

DESIGN

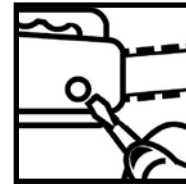
GIUGIARO

D E S I G N

PERFORMANCE



COMFORT



GST 250 "Carving"

The new **GST 250** pruning chainsaw is the perfect tool for all professional jobs. Reliable and suitable for an array of tasks, such as cutting at awkward angles and lopping in unusual positions (with the machine tilted or upside-down).

The new chainsaw offers an excellent combination of lightness, cutting power and flexibility of use. It is the ideal tool for all plant pruning jobs (fruit and olive trees in particular).

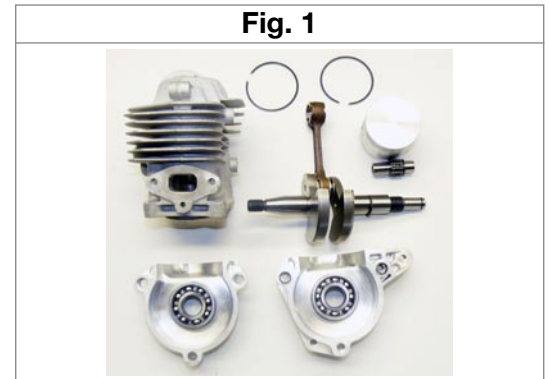
Engineering developments, improvements and several new features make this chainsaw:

- reliable
- sturdily-built
- easy to maintain
- light

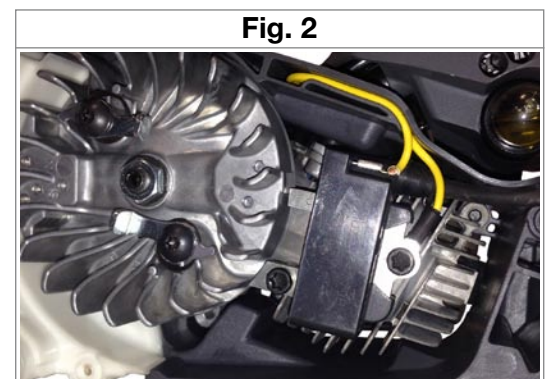
in all types of operating conditions.

PERFORMANCE AND ENGINEERING SOLUTIONS

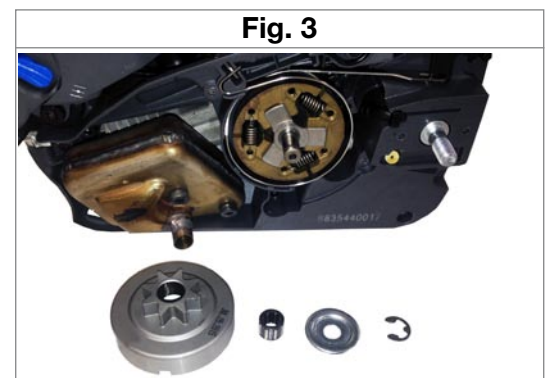
- **Professional engine** 25.4 cm³ two-stroke (EURO 2) rated a generous 1.3 HP (1 kW), guarantees top performance. Small, lightweight with a high cutting speed, the ideal machine for pruning, maintenance and minor cutting work.
- **Piston with 2 rings, diecast cylinder** with Nickel plating, forged con rod and crankshaft (Fig. 1): guaranteeing an extremely rugged and durable engine.



- **Digital coil with electronic control** (Fig. 2) **and rev limiter:** for easier starting, improved performance thanks to uniform combustion, and reduced fuel consumption.



- **"ON-BOARD" clutch** (Fig. 3) with drum and brake belt built into the crankcase: prevents ingress of foreign matter between the centrifugal weights ensuring consistently perfect operation, facilitates disassembly of the chain guard and simplifies cleaning and/or routine maintenance.



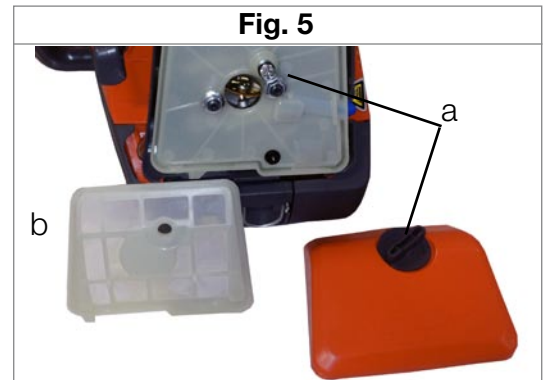
- **10"/25cm Stellite-tip carving bar** (optional) is suitable for intricate work, tree surgery and tackling plant damage (Fig. 4).

- **Automatic oil pump** (Fig. 4a): driven by the clutch housing, delivers zero oil flow with the engine idling (reducing oil consumption and pollution).
- Plastic worm gear with brass bush (Fig. 4b).



PERFORMANCE AND ENGINEERING SOLUTIONS

- **Filter accessible** without the need for **tools**: 1/4 just unscrew a knob (attached permanently to the cover to avoid being lost) (Fig. 5a)
- **A large nylon air filter** and **labyrinth pre-filter** (Fig. 5b) offer excellent filtration, ideal for heavily dust-laden environments.



- **“Easy On” easy starting** : makes engine easier to start, without kickbacks, minimizing operator effort (Fig.6).

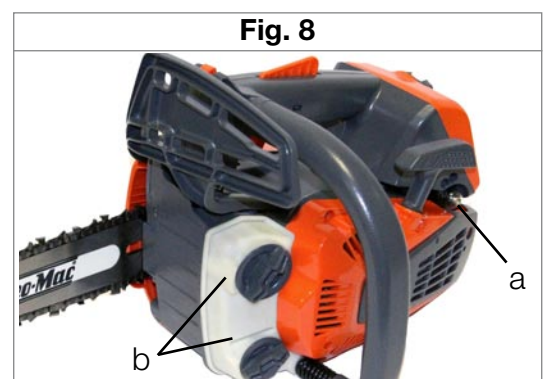


- **Lateral chain tensioner** for swift adjustment of chain tension in any operating position (Fig. 7).



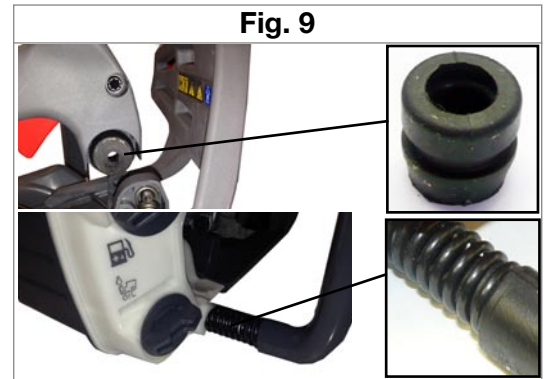
- Clearly visible **primer** device, ease of access and operation (Fig. 8a): facilitates starting from cold, after refuelling and following lengthy idle periods.

- **Transparent tanks**: for immediate display of the oil and fuel (Fig. 8b).



COMFORT

- **Anti-vibration system** using 1 spring damper and 2 rubbers stops: significantly isolates the operator from engine vibration, for greater comfort during use (Fig. 9).



- **Greater compactness** and **lighter weight** guarantee ease of handling and operation.

- **Ergonomics** and **balance** (Fig. 10), thanks to a designer of excellence (**GIUGIARO DESIGN**), the new chain saw pruning is distinguished by an excellent handling in any working position without operator fatigue.



- **Ergonomic controls**: all the controls are grouped together and easily accessible (Fig. 11).



- A special **steel hook foldable**, (Fig. 12) allows the operator to hang the chainsaw, from a belt or waistband while reaching for branches inaccessible to mechanical equipment.





our power, your passion

TECHNICAL SPECIFICATIONS

MODEL		GST 250
ENGINE		
TYPE		Emak 2-stroke - EURO 2
DISPLACEMENT	cm ³	25,4
BORE	mm	34
STROKE	mm	28
IDLING SPEED RPM	rpm	3000 ÷ 3200
MAX NO LOAD SPEED (with bar/chain)	rpm	14500
POWER	HP/kW (rpm)	1,3 / 0,95 (9000)
MAX TORQUE	Nm (rpm)	1,1 (6500)
SPECIFIC FUEL CONSUMPTION	g/HP h (rpm)	400 (9000)
HOURLY FUEL CONSUMPTION	l/h (rpm)	0,66 (9000)
IGNITION SYSTEM		
TYPE		Capacitive electronic
SPARK PLUG		NGK CMR7A
FUEL & LUBRICATION SYSTEM		
CARBURETTOR		Walbro WT-1163
FUEL		2% (50:1)
FUEL TANK CAPACITY	l	0,220
OIL PUMP		Automatic (gear driven) - Zero flow when idling - not adjustable
OIL RESERVOIR CAPACITY	l	0,185
BAR AND CHAIN		
BAR LENGTH	in. (cm)	10" (25) sprocket - 10" (25) carving
CHAIN PITCH	in.	1/4" x 0.5" 58 links (sprocket) - 1/4" x 0.5" 60 links (carving)
CHAIN BRAKE		Inertia-activated
CHAIN TENSIONER		Lateral
N° SPROCKET TEETH		8 (sprocket) - 8 (carving)
SOUND PRESSURE EN 11681-1 - EN 22868	dB (A)	97,7
GUARANTEED SOUND POWER LEVEL 2000/14/EC EN 22868 - EN ISO 3744	dB (A)	111
VIBRATION LEVEL - (sprocket) EN 11681-1 - EN 22867 - EN 12096	(m/s ²)	6.9 Sx – 8.8 Dx
VIBRATION LEVEL - (carving) EN 11681-1 - EN 22867 - EN 12096	(m/s ²)	6.9 Sx – 8.2 Dx
ANTI-VIBRATION MOUNTS		1 spring damper and 2 rubbers
DIMENSIONS (excluding bar/chain)	mm	240x215x230
WEIGHT	kg	2,7
POWER-TO-WEIGHT RATIO	kg/kW	2,85

TREE CLIMBING TROUSERS

Safety



EN 381-5: 1995 type A Class 1 (20 m/sec.)

Approval CE, standards EN340 and EN 381-5: 1995 type A, Class 1, Category 2 PPE, able to resist a chain speed of 20 m/sec.

Protection zone

180° front, 5 cm right inside leg, 5 cm left inside leg.



Safety	<ul style="list-style-type: none"> • CE approval, standards EN340 and EN 381-5: 1995 type A, Class 1. • Category 2 PPE. • Anti-rip protection – RIPSTOP. • Special 5-layer anti-cut protection (softy).
Fit	<ul style="list-style-type: none"> • Protective anti-cut trousers specifically designed and produced for tree climbing. Extremely lightweight with breathable fabric. Slim fit thanks to the tri-elastic stretch fabric for the maximum comfort and exceptional freedom of movement.
Materials	<ul style="list-style-type: none"> • Waterproofed with SOFIGUARD treatment. • 94% polyamide, 6% elastham (CORDURA - RIPSTOP) • Black reinforcement: 50% polyamide, 45% polyester, 5% elastham.

Additional	Code
Sz. 42	3155051
Sz. 44	3155052
Sz. 46	3155053
Sz. 48	3155054
Sz. 50	3155055
Sz. 52	3155056
	Additional sizes on request
Pack	Cardboard box

Practical



Anti-cut protection with "Softy" technology: 5 layers of high-tenacity anti-cut fabric, extremely lightweight and flexible to guarantee: safety, low weight, a comfortable fit and freedom of movement. The antibacterial treatment and fast drying performance help to banish odours while enhancing the sensation of freshness and comfort for the wearer.



LH leg pocket with zipper.



Spark plug wrench pocket on LH leg.



Large rear concealed zippers for a slim fit and the maximum comfort, also when worn in conjunction with boots.



Tri-elastic stretch fabric for a close fit and freedom of movement. Elasticized waistband with 2 press stud fastener system to ensure a perfect fit.



2 front pockets and back pocket with zipper, braces buttons, 2 attachment rings, 2 belt loops, dorsal loop.



Knee, crotch and rear in bi-elastic breathable fabric for the maximum freedom of movement and ventilation.

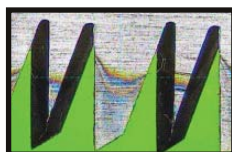
SRM18R folding pruning



High carbon steel blade with a hard chrome coating that also provides anti-corrosion performance. Replaceable blade.



The teeth are ground on 3 planes and pulse hardened to create an extremely durable cutting edge.



The special machining of the blade using the "surface flaring" technique facilitates penetration into the branch and greatly reduces friction.



Model	SRM18R
Code	3063063
Ean 13	8026619053475
Cutter type	Cutting action tie
Blade	High carbon steel with hard chrome coating
Blade length	18 cm
Treatment	Pulse hardened
Handle type	Rubber clad
Handle material	Plastic
Spare parts	Available
Weight	210 g
Packing	10 pieces / carton box

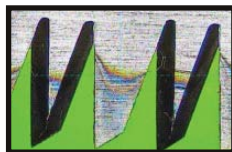
SRM30 pruning saw



High carbon steel blade with a hard chrome coating that also provides anti-corrosion performance. Replaceable blade.



The teeth are ground on 3 planes and pulse hardened to create an extremely durable cutting edge.



The special machining of the blade using the "surface flaring" technique facilitates penetration into the branch and greatly reduces friction.



Model	SRM30
Code	3063067
Ean 13	8026619055301
Cutter type	Cutting action tie
Blade	High carbon steel with hard chrome coating
Blade length	30 cm
Treatment	Pulse hardened
Handle type	Rubber clad
Handle material	Plastic
Spare parts	Available
Weight	240 g
Packing	10 pieces / carton box